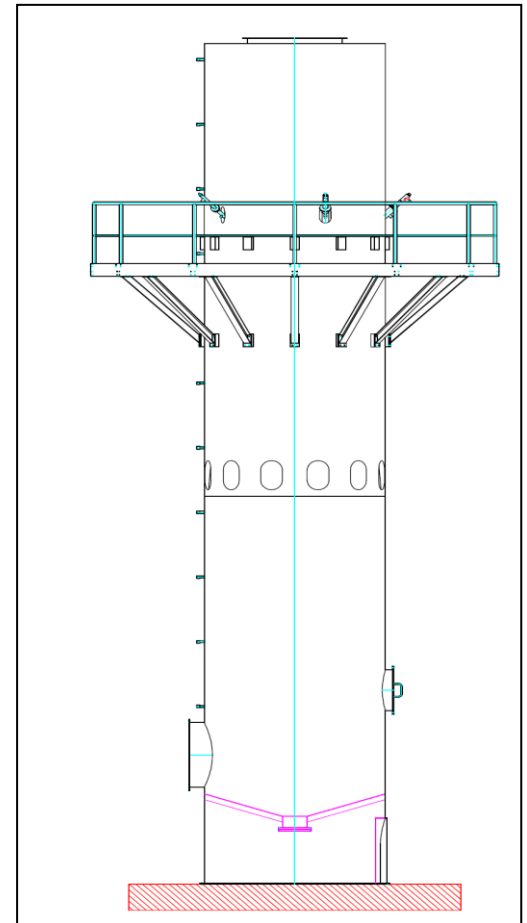


Reference No.: 6.42

Hot gas quencher

The quencher facilitates the cooling of the hot gas flow from thermal postcombustion and precedes a particle filter with subsequent gas scrubber and activated carbon filter. The exhaust gas flows through the quencher vertically from top to bottom. In the quencher the coolant is dispersed with the help of nozzles into a fine drop spray, which fills the entire internal space. The very fine water droplets cool the gas flow by vaporisation.



Technical data:

Exhaust gas volume flow:	max. 20,000 Nm ³ /h
Exhaust gas temperature, in:	max. 850°C
Exhaust gas temperature, out:	200°C
Dimensions:	Ø 2,400 mm x 13,085 mm