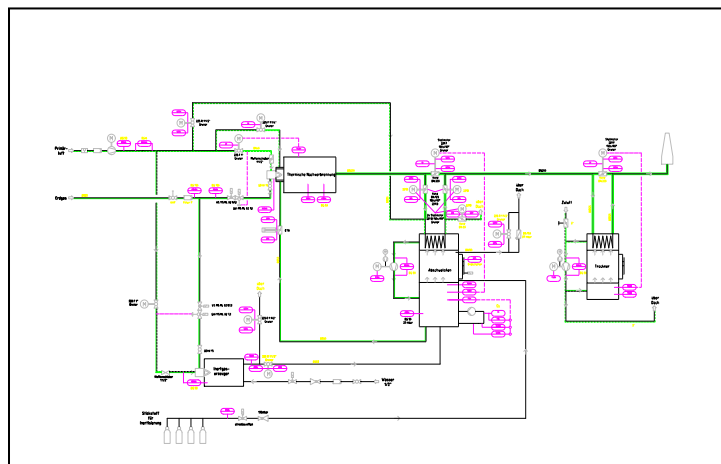


Reference No.: 6.23

Pyrolyser with thermal postcombustion

The smoulder oven is utilised to recycle sources containing aluminium. Under perfectly even heating in air-free conditions the coating is removed and heated. At the same time the energy contained in the pyrolysed exhaust gases is used to provide heat for the process.



The innovation of this plant design is marked by:

- Main energy demand is corrosive gas from the smoulder process (autothermal operation)
- Least possible additional fuel need through the minimum ballast air ratio
- Complete burn under optimum combustion-technical conditions
- Even temperature distribution and heating of the items introduced through intensive and even hot gas circulation



Technical data:

Load time:

max. 6 hr

Kiln temperature:

500°C

Pure gas amount TNV (unknown abbreviation):

180 Nm³/hr

Exhaust air volume of kilns:

30 Nm³/hr